



**Keystone RV
Company**

SPRINTER

by Keystone



CAMPING MADE EASY MEETS MODERN FUNCTIONALITY



When Cole Davis founded Keystone RV in 1996 his vision was clear: Build a quality RV loaded with features priced thousands less than other RVs on the market. To accomplish his goal, Cole would recruit and build a strong team, focus on keeping overhead low, and empower the people closest to the customer to make decisions. Within a few short months after opening the doors, Keystone produced its very first camper—the wood framed, aluminum-skinned Sprinter. Delivering big on quality, features and value, the public fell in love with Sprinter and a star was born.

As customers appetite skyrocketed, new Keystone models were added to satisfy growing customer demand. Along with this tremendous growth came the need for expanded production. To meet this need, more manufacturing plants were built and staffed. By the beginning of 2000, Keystone was leading the industry in fifth wheel and trailer sales. Today, Keystone RV Company has grown to encompass over 1 million square feet of manufacturing space with facilities in Goshen, Indiana and Pendleton, Oregon. While Keystone is no longer the small “start up” we once were, our mission has remained true to Cole’s vision—“Do the job right and make sure we deliver a quality product every time.”



***THE COMPLETE
CHOICE***

FOR MORE INFORMATION ON KEYSTONE RV VISIT
WWW.BIT.LY/10A00LK

SCAN ME

FOR MORE
INFORMATION
ON KEYSTONE RV
COMPANY



SPRINTER

by Keystone

20 Years

AND STILL
GOING STRONG



OUR STORY

Sprinter was Introduced in 1996 as Keystone's first product line. Sprinter's goals remain simple; take the suggestions from our customers and make them the foundation for the Sprinter design. This philosophy has led to our slogan "Camping Made Easy" and has been the reason for our success for 20 years. Let us show you how Sprinter offers a new level of affordable luxury.



TRAVEL TRAILERS: PGS. 4-9

FIFTH WHEELS: PGS. 10-15

CAMPFIRE EDITION: PGS. 16-21

SPRINTER TRAVEL TRAILERS



TRAVEL TRAILER MODERN FUNCTIONALITY FEATURES

2 TONE PAINTED FRONT CAP

NEW



REAR CAMERA SETUP

NEW



OUTDOOR ENT. CENTER

NEW



SOLID SURFACE COUNTERTOPS

NEW



INDUSTRIAL SINK & FAUCET

NEW



SOLAR PREP



27" OVEN

NEW



60" X 80" RESIDENTIAL QUEEN BEDS



KEYED ALIKE LOCKS

NEW



REMOTE SYSTEM



AUTO LEVEL UP SYSTEM

NEW



LED LIGHTING IN ALL ROOMS



TRAVEL TRAILER FLOORPLANS



312MLS



319MKS



325BMK



332DEN

MODEL	SHIPPING WEIGHT	CARRYING CAPACITY	HITCH WEIGHT	EXT LENGTH*	EXT HEIGHT	FRESH WATER	WASTE WATER	GREY WATER	LP6
312MLS	8255	2745	915	35' 4"	11' 3"	81	34	68	60
319MKS	8445	2740	1025	34' 11"	11' 3"	81	34	68	60
325BMK	8635	2775	1250	36' 11"	11' 3"	81	34	34	60
332DEN	8300	3095	1235	36' 11"	11' 3"	81	34	34	60

FEELS LIKE HOME,
SO RELAX, WE
MAKE IT EASY.

At Sprinter we understand that finding the time to relax is often hard to do. So for the time you find to slow down and enjoy North America's beauty, we want you to be able to enjoy every minute of it. Take a look at a Sprinter today and let us show you, how we "MAKE CAMPING EASY".



9 | TRAVEL TRAILERS



325BMK
SHOWN IN ALDER DECOR

TRAVEL TRAILER INTERIORS

332DEN
SHOWN IN ASHFORD DECOR



7 | TRAVEL TRAILERS

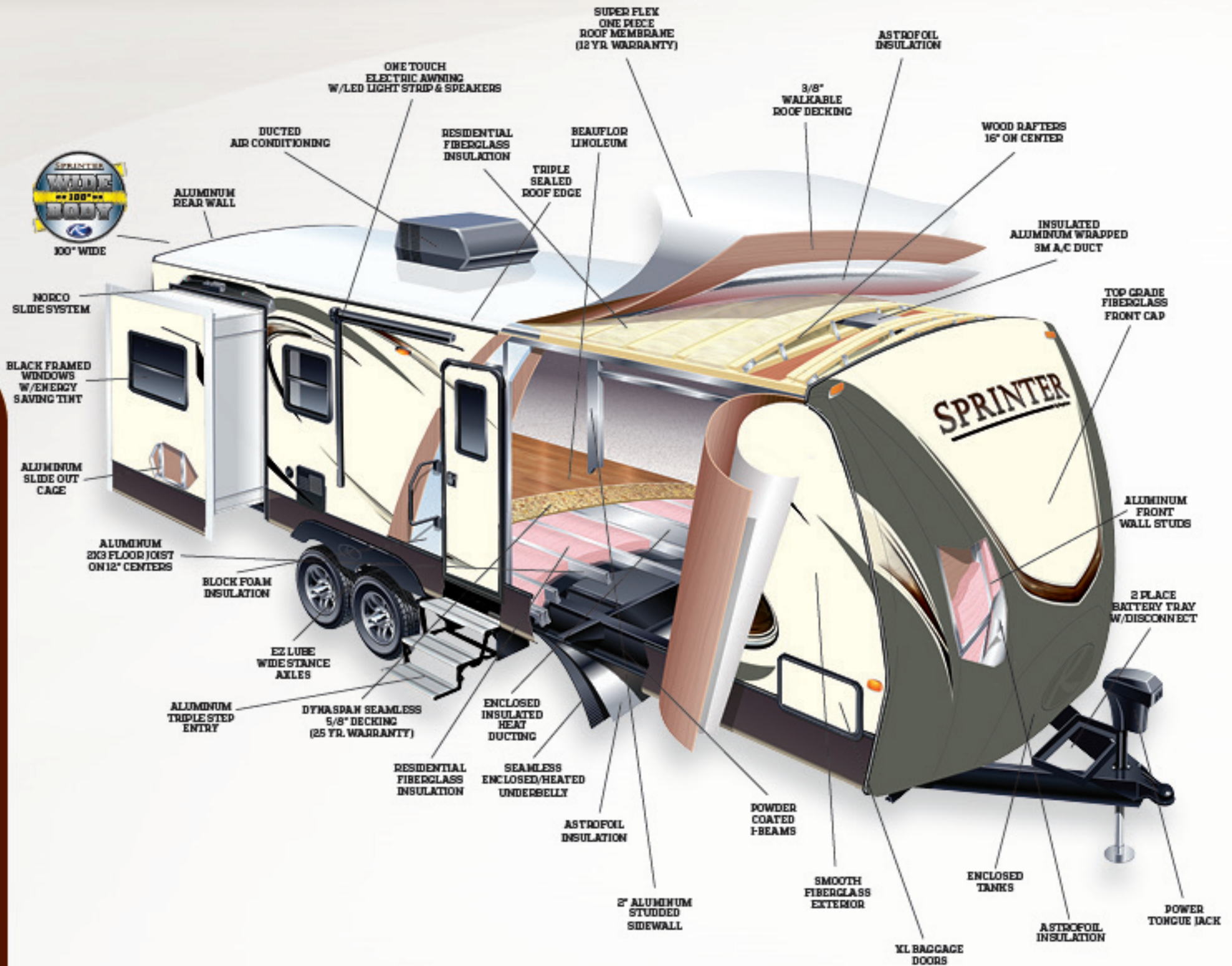


325BMK
BEDROOM



325BMK
BATHROOM

TRAVEL TRAILER CONSTRUCTION



PERFORMANCE INSULATION PACKAGE

SPACE AGE TECHNOLOGY

ASTROFOIL INSULATION

PERFORMANCE AT 0°

PERFORMANCE AT 100°

AN UPGRADED INSULATION PACKAGE USING SPACE AGE FOIL TECHNOLOGY THAT WAS INDEPENDENTLY TESTED TO PERFORM AT 0-DEGREES AND 100-DEGREES. STANDARD ON ALL TRAVEL TRAILERS AND FIFTH WHEELS. R-VALUES: WALLS (R9) - (ROOF) R-28 - (FLOOR) R-30 - (FRONT WALL) R-20



WIDE BODY DESIGN OFFERS MORE INTERIOR LIVING SPACE



↑ NOT AVAILABLE ON ALL MODELS



PRINTED FRONT CAP WITH EXCLUSIVE KEY-SHIELD PRINT TECHNOLOGY

TRAVEL TRAILER STANDARDS & OPTIONS

EXTERIOR FEATURES

- » Keyed Alike lock system **NEW**
- » Furrion solar prep quick connect **NEW**
- » Furrion back up camera prep **NEW**
- » Industry best, 100" Wide body construction
- » Performance Insulation Package w/ Astrofoil layer in the subfloor, roof, slideout floors, front wall, (R30 floor; R28 roof; R18 slideout floor; R20 front wall)
- » G4 cable slide system w/ 4 point seal **NEW**
- » 100" wide-stance axles
- » Control TT auto leveling jacks **NEW**
- » 30" friction hinge entry door
- » Electric awning with Auto-Dump, friction-hinge adjustment, LED light strip, manual override, and speakers
- » Backed for rear ladder
- » 2 Battery tray with battery disconnect
- » Splash guard under slide
- » Best in class 2" laminated aluminum framed sidewalls
- » Enclosed underbelly with direct vent heat
- » E-Z Lube axles
- » Next Generation Fiberglass Front Cap w/ enclosed LP tank storage
- » Tinted safety glass windows
- » Lockable baggage doors
- » Rear bumper storage w/ end caps
- » 20th Anniversary lit badging **NEW**
- » XL entry door grab handle
- » Tough Guard painted skirt metal
- » 4" extra long rain spouts
- » Two 30lb. LP bottles with auto change-over regulator
- » Blow molded seamless holding tanks
- » Black tank flush system
- » Outside shower
- » 30 Amp power cord (50 amp detachable cord w/ selected 50 amp service option)
- » Cable and satellite hook-up
- » Aluminum wheels
- » 100" Wide stance axles
- » Light at the termination points
- » Outside TV hookup with 110 recep, and cable prep in pass thru
- » Aluminum triple step entry
- » Outside entertainment center models include: two burner cook-top, 40" LED TV, 1.7 cu. ft. 110v fridge & storage
- » Remote control system (Slideouts, Auto Level System & LED light strip, Awning)

INTERIOR FEATURES

- » Full 96" interior width (Added square footage)
- » 5/8" water resistant Dynaspan flooring with 25 year full, and limited lifetime warranty
- » Washer/Dryer prep (319MKS only)
- » 80" Interior Height
- » 12 Volt, 55 amp converter
- » 35,000 BTU auto-ignition furnace
- » 13,500 BTU ducted air conditioner with "Quick Cool" (15k option)
- » Windows in both Slide-room end walls (N/A in bedroom slide-room on TT)
- » Water heater bypass for easy winterization
- » Digital Thermostat
- » Residential cabinet hardware
- » Large picture window at the dinette
- » Interior access, manual override for the slide rooms
- » In-floor hard-ducted heat
- » LED overhead lighting in every room
- » Central Command Center for monitoring all tanks and battery, awning, slide-outs, lights, etc.
- » Screwed cabinetry with lumber-core stiles
- » Beauflor Linoleum w/ 7 year warranty (2 year cold crack)
- » Wired & framed for 2nd A/C (With 50 amp option)
- » Multimedia charging station

LIVING ROOM FEATURES

- » Sound bar entertainment system with Bluetooth technology, USB ports, and Blue Ray/DVD inputs
- » 32", 40", 55" HD LED TV (Depending on floorplan)
- » Cable TV hook-up with antenna and signal booster
- » Satellite prep with RG-6 cable
- » High grade carpeting
- » Residential fabric-covered valance w/removable drapes
- » Theatre seating

BATH FEATURES

- » Stainless steel vanity sink **NEW**
- » Residential medicine cabinet with mirror
- » Radius glass shower

- » Skylight over tub/shower
- » Reinforced shower support
- » Power roof vent fan
- » GFI receptacles in the bathroom
- » Illuminated light switch

KITCHEN FEATURES

- » Crown Molding cabinetry
- » Solid surface countertops **NEW**
- » LED Ambient lighting under kitchen countertop **NEW**
- » 6 gallon gas/electric DSI auto ignition water heater
- » 3 burner high output gas range
- » Large stainless steel sink **NEW**
- » 22" deep drawers
- » Full extension ball bearing metal drawer guides
- » Industrial pull-down sprayer faucet **NEW**
- » Lighted range hood with exhaust fan
- » Microwave with carousel
- » 21" oven **NEW**
- » Skylight
- » 8 cu ft, double door, gas/electric fridge

BEDROOM FEATURES

- » Full, residential 60"x80" Dream Collection bed
- » High grade carpet in master bedroom
- » Under bed storage w/ gas struts
- » Color matched bedspread
- » LED reading lights
- » Roof vent
- » Ample closet storage

SAFETY FEATURES

- » Dual hitch safety chains
- » Safety glass windows
- » Fire extinguisher
- » Smoke detector
- » Carbon monoxide detector
- » Egress windows
- » LP gas leak detector
- » Break away safety brake
- » 4 wheel electric brakes

POPULAR OPTIONS

- » Upgraded 15,000 BTU AC
- » Free-standing residential dinette with four chairs (Except 332)
- » 50 AMP electrical service w/detachable cord, and 2nd AC prep
- » Dual pane windows
- » 2nd A/C (13.5k)

LUXURY PACKAGE

- » Solid surface countertops
- » Back up camera prep
- » Industrial sink & faucet
- » Led ambient lighting
- » 21" full feature oven w/upgraded cook top
- » Stainless steel lav sink

CAMPING MADE EASY PACKAGE

- » 30" friction hinge entry door
- » E-Z Lube axles
- » XL entry door grab handle
- » Tough Guard painted skirt metal
- » 4" extra long rain spouts
- » Black tank flush system
- » Outside TV hookup with 110 recep, and cable prep in pass thru
- » Aluminum steps
- » Interior access, manual override for the slide rooms
- » Illuminated light switch
- » 22" deep drawers
- » Under bed storage w/ gas struts
- » Multimedia charging station
- » Dual battery tray w/battery disconnect
- » Solar prep
- » LED interior lighting

SPRINTER FIFTH WHEELS



FIFTH WHEEL MODERN FUNCTIONALITY FEATURES

2 TONE PAINTED FRONT CAP

NEW



REAR CAMERA SETUP

NEW



OUTDOOR ENT. CENTER

NEW



SOLID SURFACE COUNTERTOPS

NEW



21" OVEN

NEW



60" X 80" RESIDENTIAL QUEEN BEDS



INDUSTRIAL SINK & FAUCET

NEW



MAXX AIR FAN



KEYED ALIKE LOCKS



REMOTE SYSTEM



4-POINT LEVEL UP SYSTEM



SOLAR PREP

NEW



WWW.KEYSTONERV.COM/SPRINTER-WIDE-BODY

MODEL	SHIPPING WEIGHT	CARRYING CAPACITY	HITCH WEIGHT	EXT LENGTH*	EXT HEIGHT	FRESH WATER	WASTE WATER	GREY WATER	LPG
252FWRLS	7915	2585	1465	30' 3"	12' 6"	81	44	88	60
269FWRLS	8920	2680	1640	32' 11"	12' 6"	81	44	88	60
293FWBHS	9845	2855	1965	35'	12' 6"	81	78	132	60
297FWRLS	9600	2700	2140	34' 7"	12' 6"	81	44	88	60
298FWRLS	9730	2540	2110	34' 7"	12' 6"	81	44	88	60
324FWBHS	10770	3230	2200	38' 10"	12' 8"	81	44	132	60
326FWBHS	10735	3265	2125	38' 10"	12' 8"	81	44	132	60
334FWFLS	10147	3353	2110	37' 4"	12' 6"	81	34	68	60
353FWDEN	10695	3305	2060	39' 4"	12' 6"	81	44	44	60
357FWLFT	11280	2720	2370	39' 9"	12' 6"	81	44	78	60
359FWMPR	10990	3010	2395	39' 9"	12' 6"	81	68	44	60

DISCLAIMER: Product information is as accurate as possible as of the date of publication of this brochure. All features, floor plans, and specifications in this brochure are subject to change without notice. Please also consult Keystone's web site at www.keystonerv.com for more current product information and specifications. Tow Vehicle Disclaimer. CAUTION: Owners of Keystone recreational vehicles are solely responsible for the selection and proper use of tow vehicles. All customers should consult with a motor vehicle manufacturer or their dealer concerning the purchase and use of suitable tow vehicles for Keystone products. Keystone disclaims any liability or damages suffered as a result of the selection, operation, use or misuse of a tow vehicle. KEYSTONE'S LIMITED WARRANTY DOES NOT COVER DAMAGE TO THE RECREATIONAL VEHICLE OR THE TOW VEHICLE AS A RESULT OF THE SELECTION, OPERATION, USE OR MISUSE OF THE TOW VEHICLE. *REFERENCE KEYSTONE RV COMPANY OWNERS MANUAL FOR LIMITED WARRANTY DETAILS. *Length is defined as the distance from the centerline of hitch pin/coupler to rear bumper of trailer. 09.16

FIFTH WHEEL FLOORPLANS



252FWRLS



269FWRLS



293FWBHS



297FWRLS



298FWRLS



324FWBHS



326FWBHS



334FWFLS



353FWDEN



357FWLFT



359FWMPR

LUXURY
YOU'LL
LOVE, VALUE
YOU CAN
APPRECIATE.

Built upon the foundation of
Keystone's first product line,
Sprinter fifth wheels "Makes
Camping Easy" by combin-
ing luxury and value in one
beautiful fifth wheel.

21 | FIFTH WHEELS



359FWMPR
SHOWN IN ALDER DECOR



359FWMPR
BATHROOM



353FWDEN
BEDROOM

FIFTH WHEEL INTERIORS

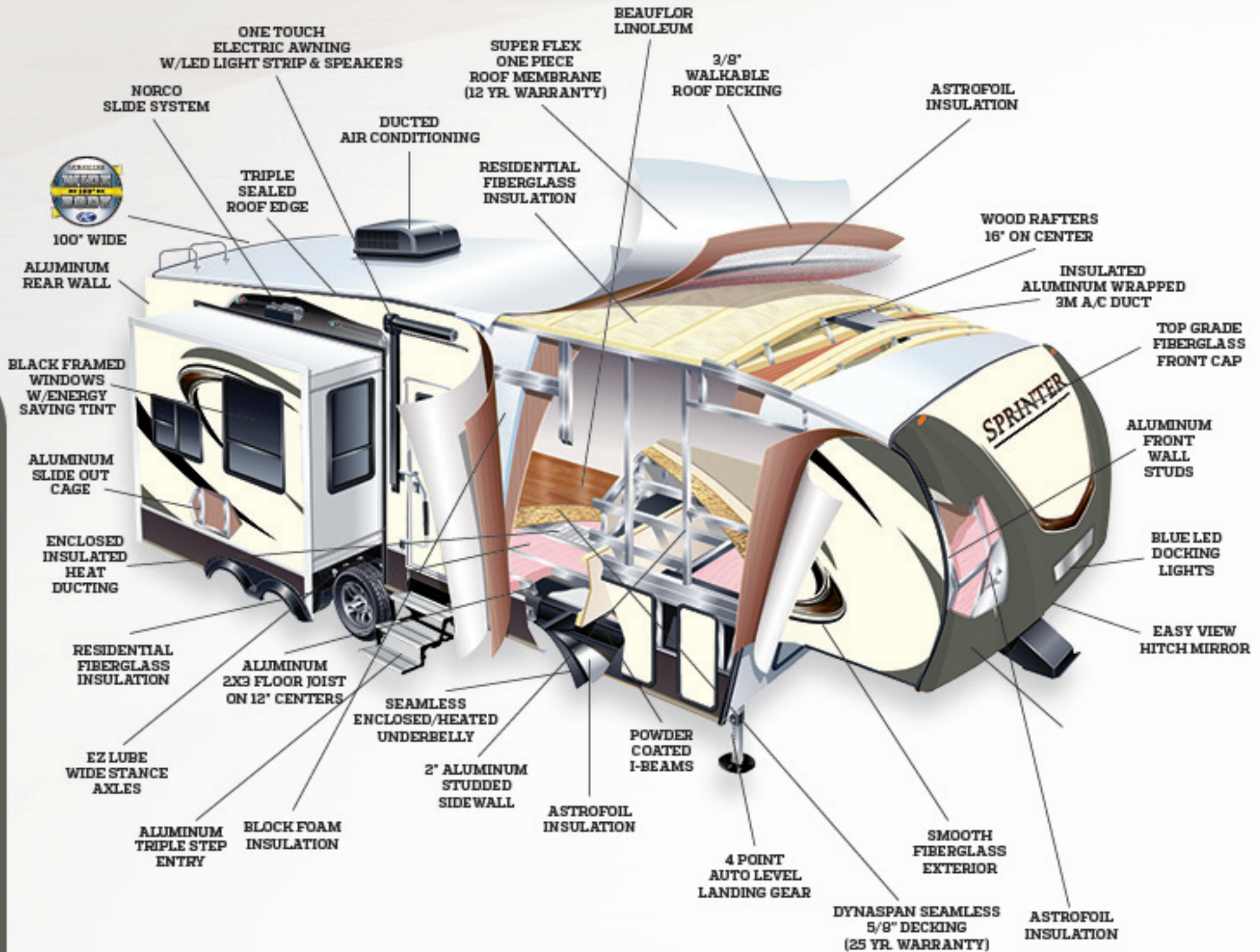
353FWDEN
SHOWN IN ASHFORD DECOR

19 | FIFTH WHEELS



359FWMPR
SHOWN IN ALDER DECOR

FIFTH WHEEL CONSTRUCTION



PERFORMANCE INSULATION PACKAGE

SPACE AGE TECHNOLOGY

ASTROFOIL INSULATION

PERFORMANCE AT 0°

PERFORMANCE AT 100°

AN UPGRADED INSULATION PACKAGE USING SPACE AGE FOIL TECHNOLOGY THAT WAS INDEPENDENTLY TESTED TO PERFORM AT 0-DEGREES AND 100-DEGREES. STANDARD ON ALL TRAVEL TRAILERS AND FIFTH WHEELS. R-VALUES: WALLS (R9) - (ROOF) R-28 - (FLOOR) R-30 - (FRONT WALL) R-20



WIDE BODY DESIGN OFFERS MORE INTERIOR LIVING SPACE



• 30% MORE TURNING RADIUS
• UTILIZING THE LATEST TECHNOLOGY TO CREATE AN INCREASE IN TURNING RADIUS



PRINTED FRONT CAP WITH EXCLUSIVE KEY-SHIELD PRINT TECHNOLOGY

FIFTH WHEEL STANDARDS & OPTIONS

EXTERIOR FEATURES

- » Keyed Alike lock system **NEW**
- » Furrion solar prep quick connect **NEW**
- » Furrion back up camera prep **NEW**
- » 100" wide body construction
- » Performance Insulation Package w/ Astrofoil layer in the subfloor, roof, slideout floors, front wall, R30 floor; R28 roof; R18 slideout floor; R20 front wall)
- » 60lb LP storage w/ auto change over regulator & 30 lb on board storage compartment
- » Slam latch baggage doors
- » 2-Tone painted MaxTurn radius fiberglass front cap
- » 100" wide stance axles
- » Electric awning with Auto-Dump, friction hinge adjustment, LED light strip, manual override, and speakers
- » Docking station - (water, cable, shower, black tank flush)
- » Rear ladder
- » Splash guard under slide
- » G4 cable slide out systems with 4 points of seal
- » Heated pass through compartment
- » Best In Class, 2" Laminated aluminum framed sidewalls
- » Enclosed underbelly with direct vent heat
- » E-Z Lube axles
- » Tinted safety glass windows
- » Power landing gear
- » 4 Point auto level up
- » 30" friction-hinge entry door
- » Rear bumper storage w/ end caps
- » Aluminum triple step entry
- » 20th Anniversary lit badging **NEW**
- » Battery disconnect
- » XL entry door grab handle
- » Tough guard painted skirt metal
- » 4" extra long rain spouts
- » Blow molded seamless holding tanks
- » Black tank flush system
- » 50 Amp detachable power cord 30' (except 252)
- » Cable and satellite hook-up
- » Outside TV hookup with 110 recep, and cable prep in pass thru
- » Outside entertainment center models include: two burner cook-top, 40" LED TV, 1.7 cu. ft. 110v fridge & storage
- » Aluminum wheels
- » Spare tire
- » Remote control system (Slideouts, 4 Pt. Level up, Awnings)

INTERIOR FEATURES

- » 6' 3" Slide room height
- » 12 Volt, 55 amp converter
- » 35,000 BTU auto-ignition furnace
- » 15k BTU ducted air conditioner with "Quick Cool"
- » 96" wide-body interior width, best in class!
- » 50 AMP electrical service (Except 252)
- » 5/8" water resistant Dynaspan flooring with 25 year full, and limited lifetime warranty
- » Water heater bypass for easy winterization
- » Digital Thermostat
- » XL picture window at the dinette
- » Industry best, in-floor ducted heat
- » LED overhead lighting in every room
- » Central Command Center for monitoring all tanks and battery, awning, slide-outs, lights, etc.
- » Industry best, 22" deep drawers with full extension ball bearing drawer guides
- » Screwed cabinetry with lumber-core stiles
- » Beauflor linoleum with 7 year warranty (2 year cold crack)
- » Interior access, manual override for the slide rooms
- » Washer/Dryer prep (Except 252, 293, 334, 359)
- » Wired & framed for 2nd A/C (Except 252)
- » Multimedia charging station

LIVING ROOM FEATURES

- » 6' 3" Slide room height
- » Fireplace (Except 252)
- » Max airfan
- » Cable TV hook-up with antenna and signal booster
- » Satellite prep with RG-6 cable
- » Residential fabric-covered valances w/removable drapes
- » Tri-fold sleeper sofa w/storage
- » 40" HD LED TV & 55" HD LED TV
- » Sound bar entertainment system with Bluetooth technology, USB ports, and DVD inputs
- » High grade carpeting

BATH FEATURES

- » 30"x42" Residential shower w/seat (Except 252, 293, 334, 359)
- » Floor to ceiling linen closet (Except 252, 293, 334)
- » Stainless steel vanity sink **NEW**
- » Porcelain foot flush toilet

- » Residential medicine cabinet with mirror
- » Skylight over tub/shower
- » Reinforced tub support
- » Power roof vent fan
- » GFI receptacles in the bathroom
- » Illuminated light switch in Bathroom
- » Radius glass shower(252, 293, 334, 359 Only)

KITCHEN FEATURES

- » LED Ambient lighting under kitchen countertop **NEW**
- » All hardwood doors and drawer fronts
- » Crown molding on cabinetry
- » 8 Cu. Ft. double-door refer (Except 298, 326, 353)
- » 6 gallon gas/electric DSI auto ignition water heater
- » 3 burner high output gas range
- » Large stainless steel sink **NEW**
- » 22" deep drawers
- » Full extension ball bearing metal drawer guides
- » Industrial pull-down sprayer faucet **NEW**
- » Waste basket storage
- » Lighted range hood with exhaust fan
- » Microwave with carousel
- » 21" oven **NEW**
- » 18 cu ft Samsung stainless steel, French-door, w/ ice maker, 110 fridge w/ 1000 watt independent inverter & battery disconnect (Standard in 298, 353, and 326)
- » Overhead cabinets above the sink
- » Skylight

BEDROOM FEATURES

- » Full, residential 60"x80" Dream Collection bed
- » Flush floor bathroom/bedroom suites (No bedside step-up)
- » Cable TV hook-up with 110 outlet
- » High grade carpet in master bedroom
- » Under bed storage w/ gas struts
- » Color matched bedspread
- » LED reading lights
- » Washer/dryer prep (269, 297, 298, 353, 357)

SAFETY FEATURES

- » Safety glass windows
- » Fire extinguisher
- » Smoke detector
- » Carbon monoxide detector
- » Egress windows
- » LP gas leak detector
- » Break away safety brake
- » 4 wheel electric brakes

POPULAR OPTIONS

- » Free-standing residential dinette with four chairs (Std. on 334)
- » Recliner(s) IPO swivel rocking chair(s)
- » Dual pane windows
- » 2ND A/C (13.5K)

LUXURY PACKAGE

- » Solid surface countertops
- » Back up camera prep
- » Industrial sink & faucet
- » Led ambient lighting
- » 21" full feature oven w/upgraded cook top
- » Stainless steel lav sink

CAMPING MADE EASY PACKAGE

- » 30" friction hinge entry door
- » E-Z Lube axles
- » XL entry door grab handle
- » Tough Guard painted skirt metal
- » 4" extra long rain spouts
- » Black tank flush system
- » Outside TV hookup with 110 recep, and cable prep in pass thru
- » Aluminum steps
- » Interior access, manual override for the slide rooms
- » Illuminated light switch
- » 22" deep drawers
- » Under bed storage w/ gas struts
- » Multimedia charging station
- » Dual battery tray w/battery disconnect
- » Solar prep
- » Max Turn technology

SPRINTER CAMPFIRE



A WHOLE NEW LEVEL OF COMFORT.

Sprinter introduces the Campfire Edition: A whole new level of comfort, with features for the modern camper. So take a load off, relax, and enjoy the Campfire.



CAMPFIRE MODERN FUNCTIONALITY FEATURES



CAMPFIRE TRAVEL TRAILER FLOORPLANS



25RK



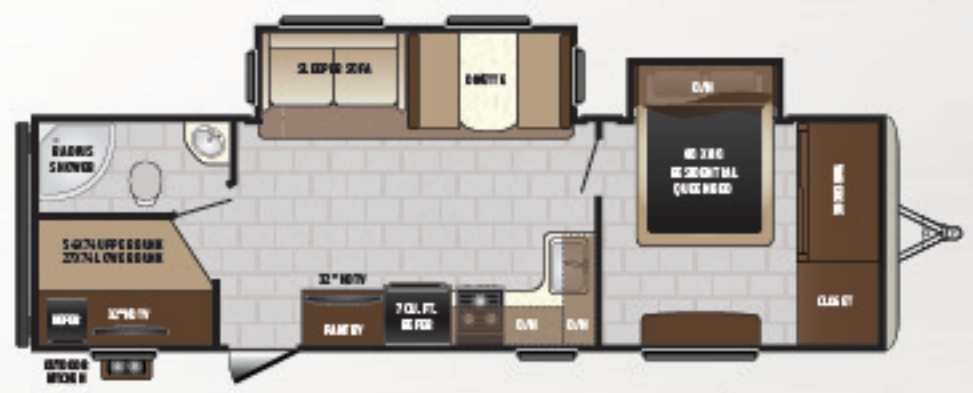
26RB



27RL



29FK



29BH



33BH

MODEL	SHIPPING WEIGHT	CARRYING CAPACITY	HITCH WEIGHT	EXT LENGTH*	EXT HEIGHT	FRESH WATER	WASTE WATER	GREY WATER	LPG
25RK	6370	2830	775	29' 8"	11' 1"	81	34	68	60
26RB	6770	2430	785	29' 8"	11' 1"	81	34	68	60
27RL	6860	2640	780	32' 0"	11' 1"	81	34	68	60
29BH	7845	2655	1025	33' 11"	11' 1"	81	34	68	60
29FK	7340	2660	975	33' 0"	11' 1"	81	34	68	60
33BH	8040	3120	1000	36' 11"	11' 3"	81	34	34	60

DISCLAIMER: Product information is as accurate as possible as of the date of publication of this brochure. All features, floor plans, and specifications in this brochure are subject to change without notice. Please also consult Keystone's web site at www.keystonerv.com for more current product information and specifications. Tow Vehicle Disclaimer. CAUTION: Owners of Keystone recreational vehicles are solely responsible for the selection and proper use of tow vehicles. All customers should consult with a motor vehicle manufacturer or their dealer concerning the purchase and use of suitable tow vehicles for Keystone products. Keystone disclaims any liability or damages suffered as a result of the selection, operation, use or misuse of a tow vehicle. KEYSTONE'S LIMITED WARRANTY DOES NOT COVER DAMAGE TO THE RECREATIONAL VEHICLE OR THE TOW VEHICLE AS A RESULT OF THE SELECTION, OPERATION, USE OR MISUSE OF THE TOW VEHICLE. *REFERENCE KEYSTONE RV COMPANY OWNERS MANUAL FOR LIMITED WARRANTY DETAILS. *Length is defined as the distance from the centerline of hitch/coupler to rear bumper of trailer. 09.18

CAMPING MADE AFFORDABLE.

GREAT PRICE, AMAZING VALUE

The new Sprinter Campfire edition offers you six travel trailer floorplans loaded with features like Wide-Body construction, power awning with LED lights and built-in speakers, residential queen bed, auto leveling jacks, full outdoor kitchen, and much more. All this at a price you'll find extremely pleasing.



91 | CAMPFIRE EDITION

33BH
SHOWN IN ASHFORD DECOR

CAMPFIRE INTERIORS

29BH
SHOWN IN ALDER DECOR



91 | CAMPFIRE EDITION

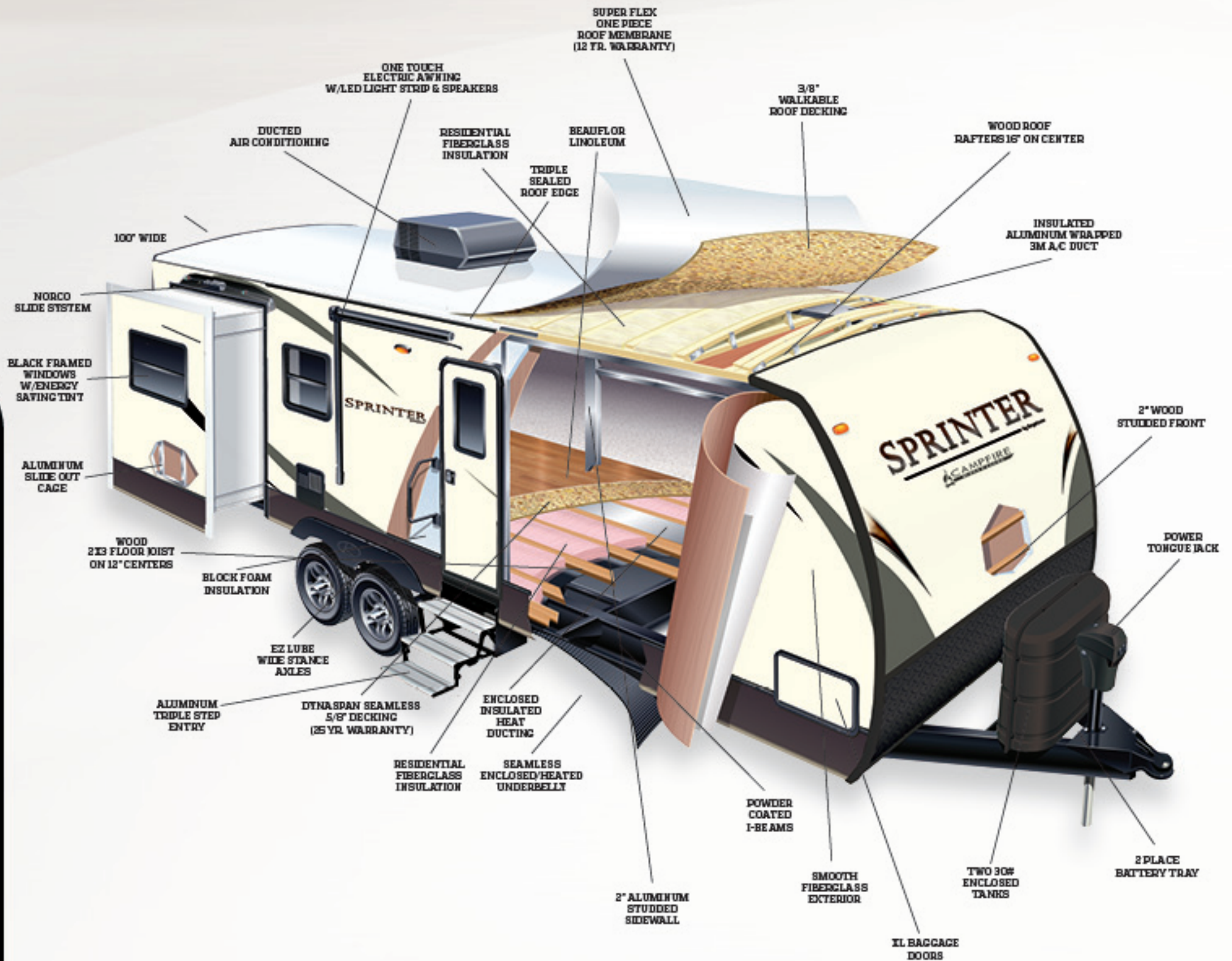


29BH
ADDITIONAL STORAGE



33BH
BATHROOM

CAMPFIRE CONSTRUCTION



22 | CAMPFIRE EDITION

Stay in Touch



Sprinter is always just a touch away. You'll find 360 virtual tours, location of your nearest dealer, photos, videos and all of the latest information about Sprinter on our easy to navigate website. Everything you need can be accessed anytime, day or night, from home or on the road. You can also find us on the Keystone RV facebook.

KEYSTONERV.COM/SPRINTER-WIDE-BODY

CAMPFIRE STANDARDS & OPTIONS

EXTERIOR FEATURES

- » Keyed Alike lock system **NEW**
- » Furrion solar prep quick connect **NEW**
- » Furrion back up camera prep **NEW**
- » Industry best, 100" Wide body construction
- » 100" wide-stance axles
- » Control TT auto leveling jacks **NEW**
- » 30" friction hinge entry door
- » Electric awning with Auto-Dump, friction-hinge adjustment, LED light strip, manual override, and speakers
- » Backed for rear ladder
- » 2 Battery tray
- » Splash guard under slide
- » G4 cable slide system w/ 4 point seal **NEW**
- » Best in class 2" laminated aluminum framed sidewalls
- » Enclosed underbelly with direct vent heat
- » E-Z Lube axles
- » Tinted safety glass windows
- » 20th Anniversary lit badging **NEW**
- » Rear bumper storage w/ end caps
- » Aluminum triple entry step
- » XL entry door grab handle
- » Tough Guard painted skirt metal
- » 4" extra long rain spouts
- » Two 30lb. LP bottles with auto change-over regulator
- » Blow molded seamless holding tanks
- » Black tank flush system
- » Outside shower
- » 30 Amp power cord
- » Cable and satellite hook-up
- » Aluminum wheels
- » Spare tire
- » Outside TV cable hookup with 110 recep in pass thru
- » Outside entertainment center models include: two burner cook-top, 32" LED TV, 1.7 cu. ft. 110v fridge & storage
- » Remote control system (Slideouts, Auto Level System & LED light strip, Awning)

INTERIOR FEATURES

- » Full 96" interior width (Added square footage)
- » 5/8" water resistant Dynaspan flooring with 25 year full, and limited lifetime warranty
- » 80" Interior Height
- » 12 Volt, 55 amp converter
- » 35,000 BTU auto-ignition furnace
- » 13,500 BTU ducted air conditioner with "Quick Cool"
- » Windows in both Slide-room end walls
- » Water heater bypass for easy winterization
- » Digital Thermostat
- » Residential cabinet hardware
- » Large picture window at the dinette & sofa
- » Interior access, manual override for the slide rooms
- » In-floor hard-ducted heat
- » LED overhead lighting in every room
- » Central Command Center for monitoring all tanks and battery, awning, slide-outs, lights, etc.
- » Screwed cabinetry with lumber-core stiles
- » Beauflor Linoleum w/ 7 year warranty (2 year cold crack)

LIVING ROOM FEATURES

- » Sound bar entertainment system with Bluetooth technology, USB ports, and DVD inputs
- » 32" HD LED TV
- » Cable TV hook-up with antenna and signal booster
- » Under booth dinette storage
- » Satellite prep with RG-6 cable
- » High grade carpeting
- » Residential fabric-covered valance w/removable drapes
- » Tri-fold sleeper sofa w/storage

BATH FEATURES

- » Stainless steel vanity sink **NEW**
- » Residential medicine cabinet with mirror
- » Radial glass shower
- » Skylight over tub/shower
- » Reinforced shower support
- » Power roof vent fan
- » GFI receptacles in the bathroom
- » Illuminated light switch

KITCHEN FEATURES

- » LED Ambient lighting under kitchen countertop **NEW**
- » Crown Molding cabinetry
- » 6 gallon gas/electric DSI auto ignition water heater
- » 3 burner high output gas range
- » Large stainless steel sink **NEW**
- » 22" deep drawers
- » Full extension ball bearing metal drawer guides
- » Lighted range hood with exhaust fan
- » Microwave with carousel
- » 21" oven **NEW**
- » 7 cu ft, double door, gas/electric fridge
- » Overhead cabinets above the sink
- » Stainless steel appliances

BEDROOM FEATURES

- » Full, residential 60"x80" Dream Collection bed
- » High grade carpet in master bedroom
- » Under bed storage
- » Color matched bedspread
- » LED reading lights
- » Electrical outlet near bed
- » Roof vent
- » Ample closet storage

SAFETY FEATURES

- » Dual hitch safety chains
- » Safety glass windows
- » Fire extinguisher
- » Smoke detector
- » Carbon monoxide detector
- » Egress windows
- » LP gas leak detector
- » Break away safety brake
- » 4 wheel electric brakes

POPULAR OPTIONS

- » Upgraded 15,000 BTU AC
- » Free-standing residential dinette with four chairs (Except 25RK)
- » 50 AMP electrical service w/detachable cord, and 2nd AC prep (29FK, 33BH)

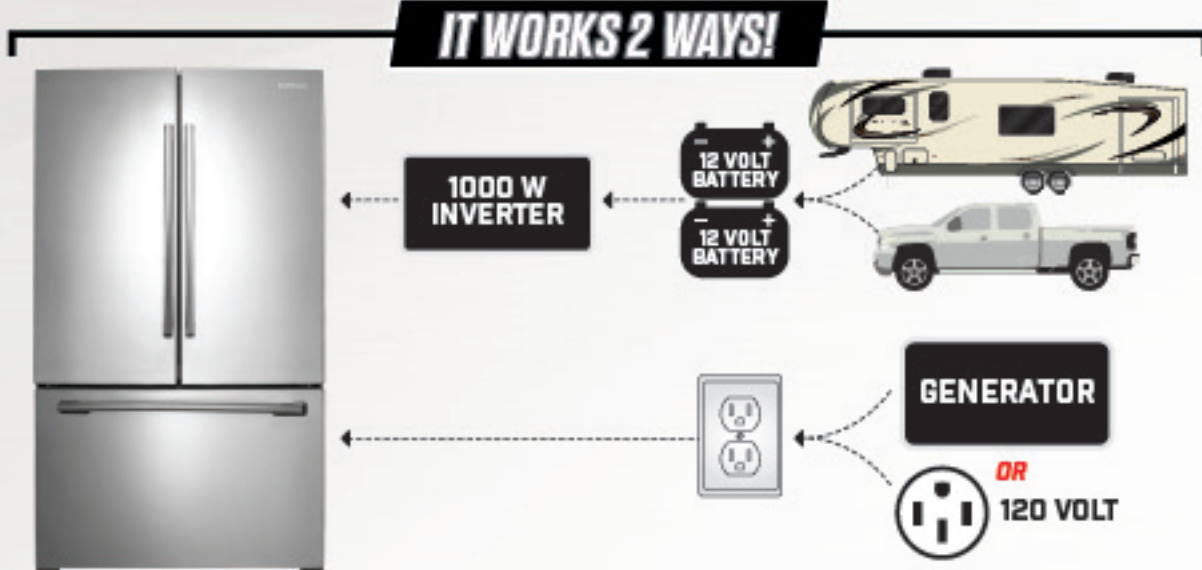
» CAMPING MADE EASY PACKAGE

- » 30" friction hinge entry door
- » E-Z Lube axles
- » XL entry door grab handle
- » Tough Guard painted skirt metal
- » 4" extra long rain spouts
- » Black tank flush system
- » Outside TV hookup with 110 recep, and cable prep in pass thru
- » Aluminum steps
- » Interior access, manual override for the slide rooms
- » Illuminated light switch
- » 22" deep drawers
- » Dual battery tray w/battery disconnect
- » Solar prep
- » LED interior lighting

TOP KEY FEATURES

18 CU. FT. 33" WIDE RESIDENTIAL FRENCH DOOR REFRIGERATOR

IT WORKS 2 WAYS!



3 FLOORPLANS - (FW's) 298FWRLS, 326FWBHS, 353FWDEN



REMOTE CONTROL SYSTEM

- Slide Rooms**
Press slide room button three times right arrow to bring slide out, press left arrow to bring slide in.
- Power Awning**
Press awning button three times right arrow to extend awning, press left arrow to bring awning in.
- Tight Spaces?**
Set up ramp leveler and leveler with Quick Camp™.
- Stabilizer Jacks**
Press jack or button three times arrow to bring jacks down, press up arrow to bring jacks up.
- Awning Light**
Press light button to turn light on and off.

4 POINT LEVEL UP

STANDARD ON TRAVEL TRAILERS & FIFTH WHEELS

Ground Control

MAXX AIR FAN

*FIFTH WHEEL ONLY

4 FAN SPEEDS

FAN WILL CONTINUE TO RUN IN CEILING FAN MODE WHEN LID IS CLOSED

CONVENIENT WALL CONTROL

RAIN SENSOR CLOSES LID WHEN IT RAINS

BACK UP CAMERA PREP



FURRION SOLAR PREP



KEYED ALIKE LOCK SYSTEM

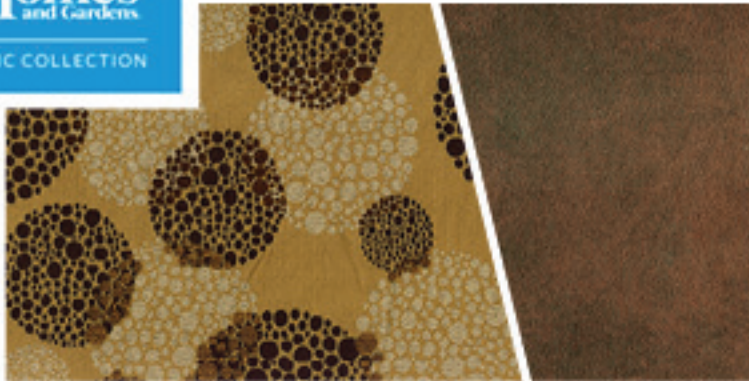
keyed alike
Your customer needs only one key!

SPRINTER

by Keystone

Our decors form the foundation for Sprinter's carefully coordinated interiors. Modern upholstery, drapery, fabrics, hardware, fashionable window treatments, walls & countertops in the latest colors and materials.

Better Homes
and Gardens
RV FABRIC COLLECTION



ALDER DECOR



PUMICE DECOR



ASHFORD DECOR



SPRINTER HAS EARNED THE RVDA DEALER SATISFACTION INDEX AWARD

RVDA is the national association representing RV retailers. The association's members include RV dealers, RV rental operators, and RV Aftermarket sales and service locations.

To qualify for the Quality Circle Award, brands/manufacturers must receive at least 15 dealer responses and score 80 percent or above in overall dealer satisfaction in the association's 18th Annual Dealer Satisfaction Index (DSI) survey.

RVDA asks dealers to express, confidentially, their level of satisfaction with their brands/manufacturers on eight core issues:

- Sales support
- Sales territory
- Vehicle design
- Vehicle reliability/quality
- Competitive price/value
- Parts support
- Dealership warranty support
- Overall dealer communications

****The DSI Quality Circle Award recognizes the high level of commitment these manufacturers show toward their dealer business partners," said RVDA Chairman of the Board Tim O'Brien of Circle K RVs in Lapeer, MI. "Their commitment to continuously improving products and processes ultimately helps dealers serve customers better."**

**RVDA.Org

SPRINTER

by Keystone



// 20 YEARS AND STILL GOING STRONG //



PURCHASING YOUR RV LOCALLY

It's up to you where you purchase your new Sprinter, but may we suggest your local dealer? Not only does it help your local economy and provide jobs, but it will also give you an opportunity to develop a service relationship with someone that will come to know you and your coach. Congratulations on finding the best built, best equipped and best value in the industry. Happy travels!

YOUR LOCAL DEALER IS:



**RV WHOLESALE
SUPERSTORE**
Quality RV's at wholesale prices

SYLVANIA OH, 43560

1-844-601-1171 | RVWSS.COM

SEPTEMBER 2016



**Keystone RV
Company**

WWW.KEYSTONERV.COM
574.535.2100 • 2642 HACKBERRY DRIVE
P.O. BOX 2000 • GOSHEN, IN 46527



Member
RVIA
RECREATIONAL VEHICLE
INDUSTRY ASSOCIATION

Go RVing.

DISCLAIMER: Product information is as accurate as possible as of the date of publication of this brochure. All features, floor plans, and specifications in this brochure are subject to change without notice. Please also consult Keystone's web site at www.keystonerv.com for more current product information and specifications. Tow Vehicle Disclaimer. CAUTION: Owners of Keystone recreational vehicles are solely responsible for the selection and proper use of tow vehicles. All customers should consult with a motor vehicle manufacturer or their dealer concerning the purchase and use of suitable tow vehicles for Keystone products. Keystone disclaims any liability or damages suffered as a result of the selection, operation, use or misuse of a tow vehicle. KEYSTONE'S LIMITED WARRANTY DOES NOT COVER DAMAGE TO THE RECREATIONAL VEHICLE OR THE TOW VEHICLE AS A RESULT OF THE SELECTION, OPERATION, USE OR MISUSE OF THE TOW VEHICLE. 09.16

CAMPING MADE EASY | WWW.KEYSTONERV.COM/SPRINTER-WIDE-BODY