

# WOLF PUP

Travel Trailers

WOLF PUP



**RV WHOLESALE  
SUPERSTORE**

*Quality RV's at wholesale prices*

**SYLVANIA OH, 43560**

**1-844-601-1171 | [RVWSS.COM](http://RVWSS.COM)**





## 16BHS

NATURAL  
MINK

*Find the outdoors in your new Wolf Pup. Wolf Pup offers easy to tow, easy to use floor plan options for your family. Our compact design allows for fuel efficient towing yet gives you plenty of space to enjoy a weekend in the great outdoors.*





18TO

NATURAL  
MINK

*The 18 TO floor plan offers a front queen bed and a full slide out for those who are looking for more room in a light weight travel trailer. Our exclusive hidden bunk feature behind the sofa offers additional sleep capacity.*





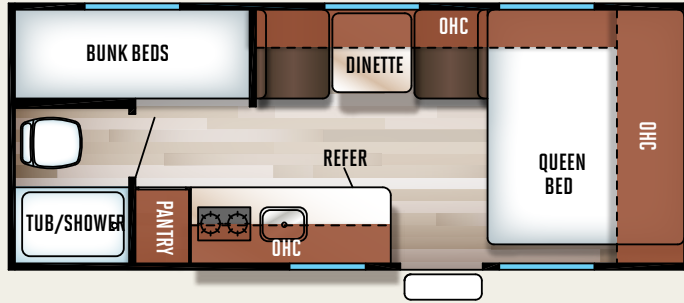
## 17RP

### NATURAL MINK

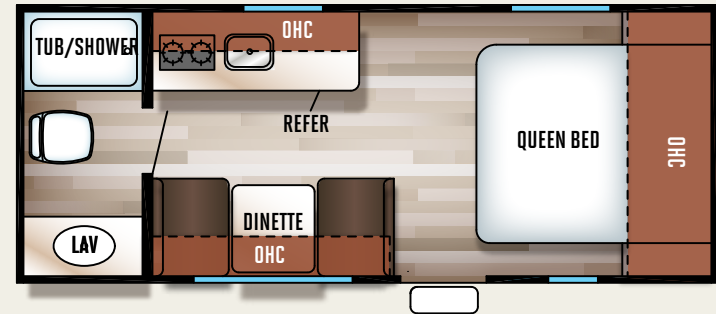
*The 17RP floor plan combines a flexible family trailer with a toy hauler. With enough space for whatever you bring along for your adventures, this floor plan gives you many camping and storage options. The spacious interior provides ample room for your family. Enjoy the great outdoors with our optional rear screen wall that brings the outdoors inside but protects you from the elements.*



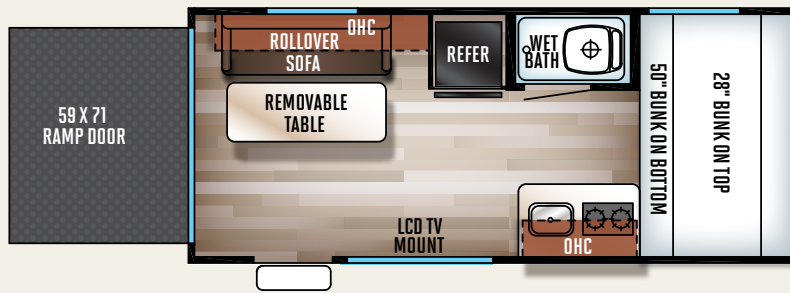
# WOLF PUP FLOORPLANS



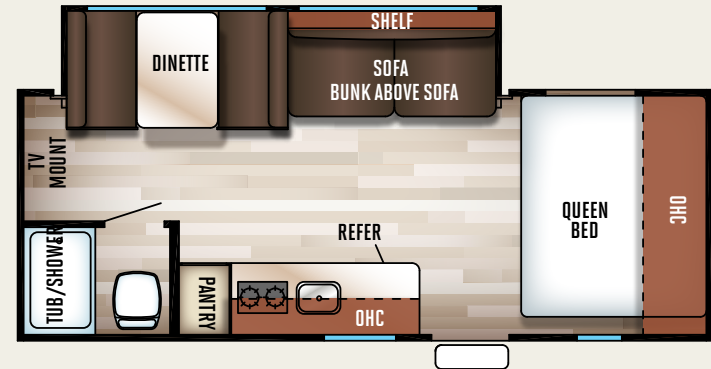
16BHS



16FQ



17RP



18TO

## WEIGHTS & MEASURES

	T16BHS	T16FQ	T17RP	T18TO
DRY HITCH WEIGHT	377-lbs.	454-lbs.	400-lbs.	437-lbs.
UNLOADED VEHICLE WEIGHT	3097-lbs.	2919-lbs.	3031-lbs.	3797-lbs.
AXLE WEIGHT	2701-lbs.	2446-lbs.	2612-lbs.	3341-lbs.
SHIP WEIGHT	3078-lbs.	2900-lbs.	3012-lbs.	3778-lbs.
GVWR W/BRAKES	3877-lbs.	3954-lbs.	5480-lbs.	5000-lbs.
CARGO CARRYING CAPACITY	780-lbs.	1035-lbs.	2449-lbs.	1203-lbs.
EXTERIOR LENGTH	21' 5"	21' 6"	20' 2"	22' 9"
EXTERIOR HEIGHT W/ AC	9'11"	9'11"	9'11"	10' 5"
EXTERIOR WIDTH	85"	85"	85"	85"
BEDROOM INTERIOR HEIGHT	78"	78"	78"	78"
FURNACE BTU	20,000	20,000	20,000	20,000
GREY CAPACITY	23-Gal.	23-Gal.	23-Gal.	23-Gal.
BLACK CAPACITY	23-Gal.	23-Gal.	23-Gal.	23-Gal.
FRESH CAPACITY	32 Gal.	32 Gal.	32 Gal.	32 Gal.
AWNING SIZE	10'	10'	10'	10'



# WOLF PUP LIMITED PACKAGE

*\*Optional package. Not all items available on all models. See participating dealers for details.*



**13.5K Air Conditioner**



**14" Mag Radial Wheels**



**20 BTU Furnace**



**6 Gallon Gas/Elec DSI Water Heater**



**Detachable Power Cord**



**DVD Player**



**External Scare Light**



**Friction Hinge Door**



**LED Interior Lights**



**Night Shades**



**Power Awning**

# WOLF PUP LIMITED PACKAGE

*\*Optional package. Not all items available on all models. See participating dealers for details.*



**RV Refrigerator in place of 3.3 Bar and Grill Refer**



**Spare Tire**



**Stabilizer Jacks**



**Stereo with Inside and Outside Speakers**



**Tire Pressure Monitors**



**Tub Surround**



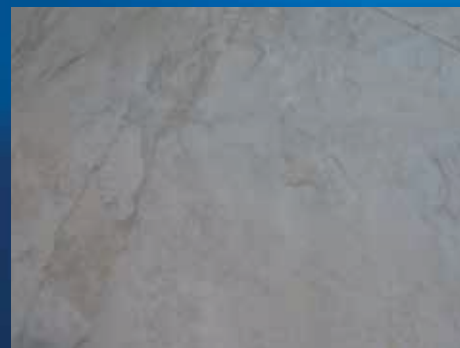
**Upgraded Hypoallergenic Evergreen Mattress**



**Upgraded Stainless Microwave**



**Upgraded Stainless Range Hood**



**High Gloss Seamless Countertop**



**USB charging stations  
(Beds, Bunks, Table where Applicable)**

# WOLF PUP STANDARDS & OPTIONS

## STANDARD EQUIPMENT

14" Tires for Improved Towing in Place of 13"  
 26" Wide Door in Place of 22" Door  
 3.3 Bar and Grill Refrigerator  
 55 Amp Converter  
 6 Gallon Water Heater  
 Aerodynamic Radius Front Profile  
 Bathroom Fan  
 Carbon Monoxide Detector  
 Coachnet Roadside Assistance  
 Detachable Cord  
 Exit Windows  
 Exterior Recept  
 Fiberglass Entry Door  
 Fire Extinguisher  
 Full Length Awning  
 GFI Protective Outlet  
 High Flow Water Pump  
 High Impact Front Metal IPO Corrugated Metal  
 High Output Cooktop  
 High Rise Faucet

Large Exterior Folding Assist Handle  
 LP Detector  
 Microwave  
 Monitor Panel  
 Nitro Filled Tires  
 One Piece Walkable Decked Roof  
 Outside Storage Door  
 Oversized Dinette with Removable Table (17 RP)  
 Porch Light  
 Range Hood (N/A 17RP)  
 Safety Glass Windows  
 Smoke Detector  
 Solar Prep and Wiring  
 TV Antenna with Hookup

## ADVANTAGE PACKAGE

Aerodynamic Radius Front Profile  
 High Impact Front metal IPO corrugated metal  
 26" Wide Door IPO 22" Door  
 14" Tires for improved towing in place of 13"

Coachnet Roadside Assistance  
 Large Exterior Folding Assist Handle  
 Exterior Recept  
 Monitor Panel  
 Outside Storage Door  
 Porch Light  
 TV Antenna with Hookups  
 Solar Prep and Wiring

## CAMPING PACKAGE

Full Length Awning  
 6 Gallon Water Heater  
 3.3 Bar and Grill Refrigerator  
 Foot Flush Toilet  
 Microwave  
 High Output Cooktop  
 Range Hood (N/A on 17RP)  
 High Rise Faucet  
 Oversized Dinette with Removable Table  
 One Piece, Walkable Decked Roof  
 Nitro Filled Tires  
 Fiberglass Entry Door

55 Amp Converter  
 High Flo Water Pump  
 Detachable Power Cord  
 Bathroom Fan

## SAFETY PACKAGE

LP Detector  
 Carbon Monoxide Detector  
 Smoke Detector  
 Fire Extinguisher  
 Safety Glass Windows  
 GFI Protective Outlet  
 Exit Windows

## OPTIONS

Back Up Camera  
 Gel Coat Sidewalls  
 Medium LED TV  
 Bedroom wardrobes (16 FO)  
 Screen Wall / Tent Wall (17RP Only)  
 Security Camera at Entrance Door  
 Flip Down Travel Rack (N/A 17RP)



Forest River, Inc. encourages our customers to purchase their Forest River products from a local dealership whenever possible for the following reasons:

It is the goal of Forest River, Inc. that all of our RV owners fully enjoy the RV experience and that customer satisfaction meets or exceeds their expectations!

- 1) Forest River, Inc. dealers are independently owned and operated businesses so priority service and scheduling is at their discretion and is often provided to customers that purchased their unit at that dealership.
- 2) Purchasing locally allows customers to establish meaningful relationships with a dealer, enhancing the RV experience through assistance with product questions, user tips or RV regulations for your state or country, and much more!
- 3) Canadian customers must meet requirements to bring an RV purchased out of the country to their home. These requirements may involve additional inspections and certifications, taxes and fees. Your local Canadian Dealer is a professional at meeting these requirements.
- 4) Scheduling timely warranty repairs and adjustments through a local dealership provides far greater flexibility and convenience to you, the customer!



## Specification Definitions

**GVWR (Gross Vehicle Weight Rating)** - is the maximum permissible weight of the unit when fully loaded. It includes all weights, inclusive of all fluids, cargo, optional equipment and accessories. For safety and product performance do NOT exceed the GVWR.

**GAWR (Gross Axle Weight Rating)** - is the maximum permissible weight, including cargo, fluids, optional equipment and accessories that can be safely supported by a combination of all axles.

**UVW (Unloaded Vehicle Weight)\*\*** - is the typical weight of the unit as manufactured at the factory. It includes all weight at the unit's axle(s) and tongue or pin and LP Gas. The UVW does not include cargo, fresh potable water, additional optional equipment or dealer installed accessories.

\*Estimated average based on standard build optional equipment.

**CCC (Cargo Carrying Capacity)\*\*** - is the amount of weight available for fresh potable water, cargo, additional optional equipment and accessories. CCC is equal to GVWR minus UVW. Available CCC should accommodate fresh potable water (8.3 lbs per gallon). Before filling the fresh water tank,

empty the black and gray tanks to provide for more cargo capacity.

\*\* Estimated average based on standard build optional equipment

Each Forest River RV is weighed at the manufacturing facility prior to shipping. A label identifying the unloaded vehicle weight of the actual unit and the cargo carrying capacity is applied to every Forest River RV prior to leaving our facilities.

The load capacity of your unit is designated by weight, not by volume, so you cannot necessarily use all available space when loading your unit.



**Learn More**  
 Scan this barcode using a QR Reader on your smart phone to learn more about Forest River.



A Berkshire Hathaway company.

*All information contained in this brochure is believed to be accurate at the time of publication. However, during the model year, it may be necessary to make revisions and Forest River, Inc., reserves the right to make all such changes without notice, including prices, colors, materials, equipment and specifications as well as the addition of new models and the discontinuance of models shown in this brochure. Therefore, please consult with your Forest River dealer and confirm the existence of any materials, design or specifications that are material to your purchase decision. All units are shipped F.O.B. Goshen, Indiana. CONSULT YOUR LOCAL DEALER FOR WARRANTY INFORMATION. FOR 1346 P/W: 2016.09.08*

## PRE-DELIVERY INSPECTION FACILITY

20,000 square feet of quality assurance. The bare essentials for a premium product. This state-of-the-art facility gives immediate daily feedback to production for quality assurance in every unit built.

YOUR WOLF PUP DEALER



**RV WHOLESALE SUPERSTORE**

Quality RV's at wholesale prices

SYLVANIA OH, 43560

1-844-601-1171 | RVWSS.COM